

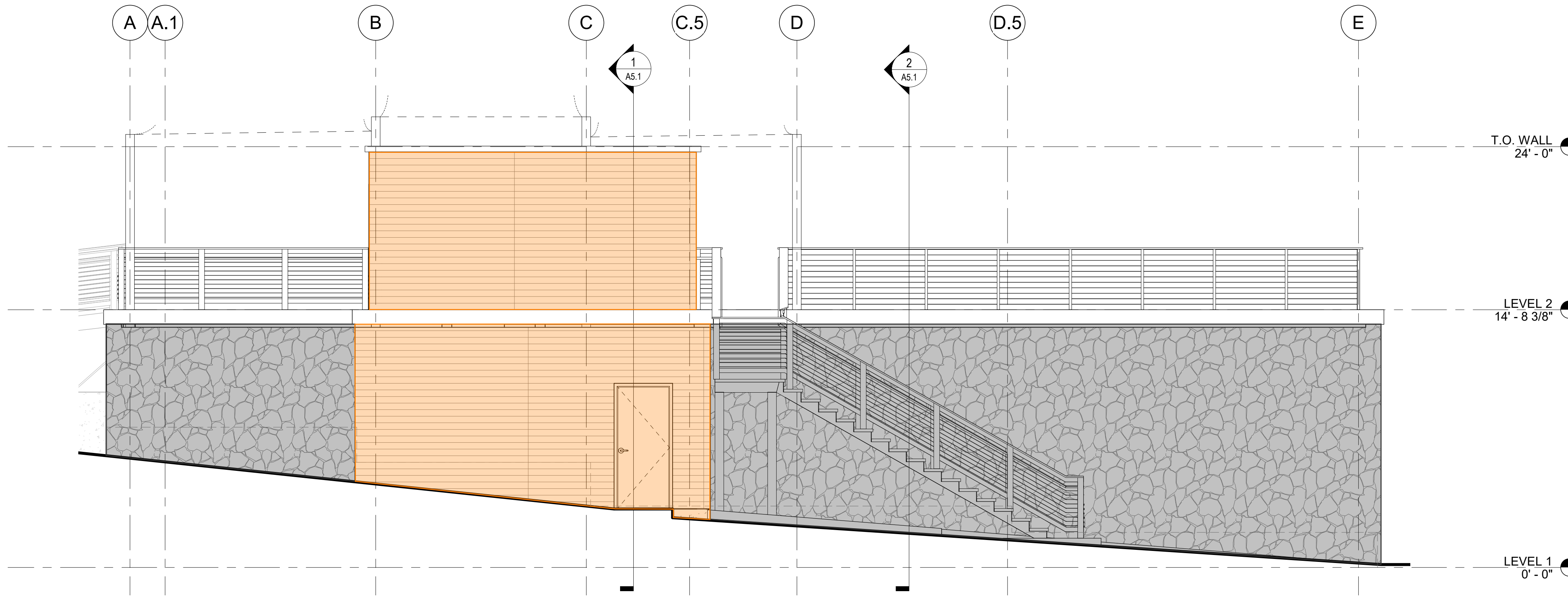
RECEIVED

V-22-0014

SEP 13 2022

PLANNING & ZONING

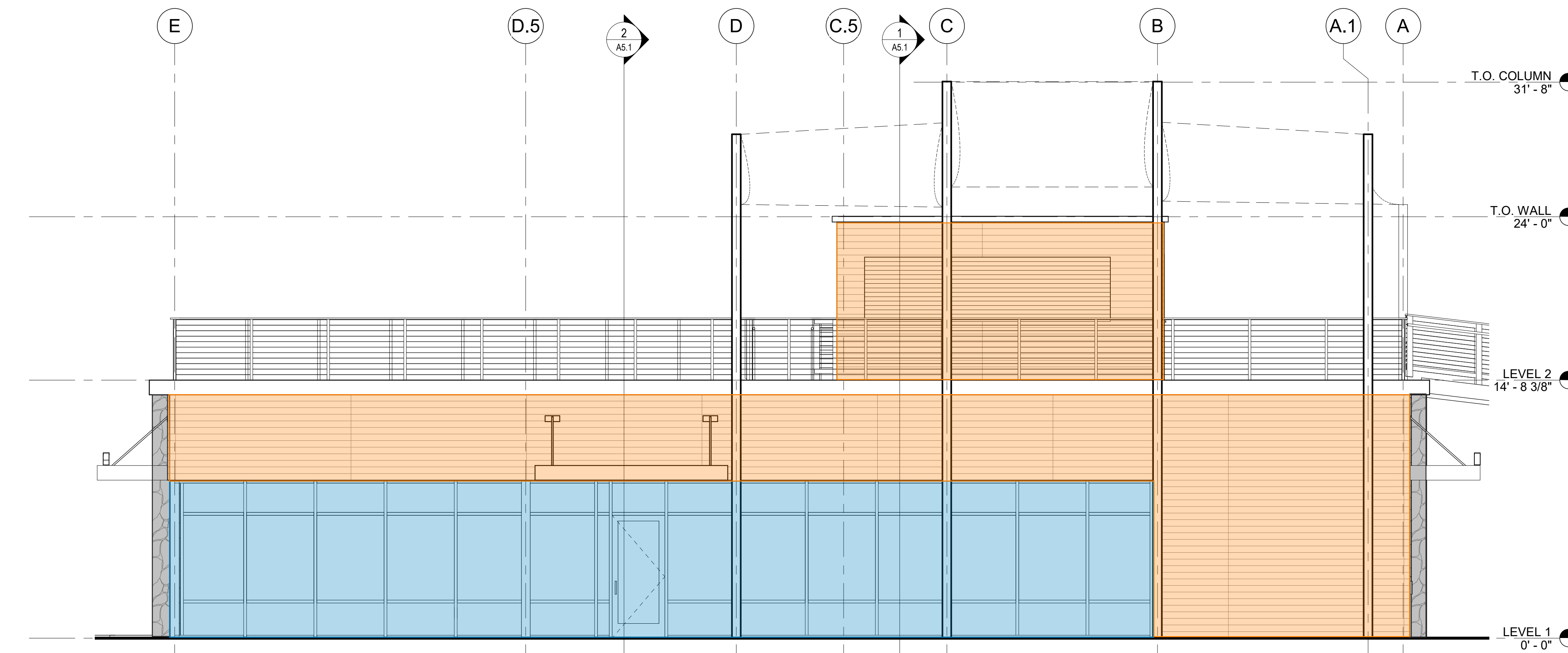
Design and construction documents as instruments of service are given in confidence and remain the property of Onyx Creative. The use of this design and these construction documents for purposes other than the specific project named herein is strictly prohibited without expressed written consent of Onyx Creative.



2 WEST ELEVATION
 1/4" = 1'-0"

WEST ELEVATION MATERIALS

MATERIAL	PERCENT OF FACADE
NICHIHA WALL PANELS	37.2%
STONE VENEER	62.8%



1 EAST ELEVATION
 1/4" = 1'-0"

EAST ELEVATION MATERIALS

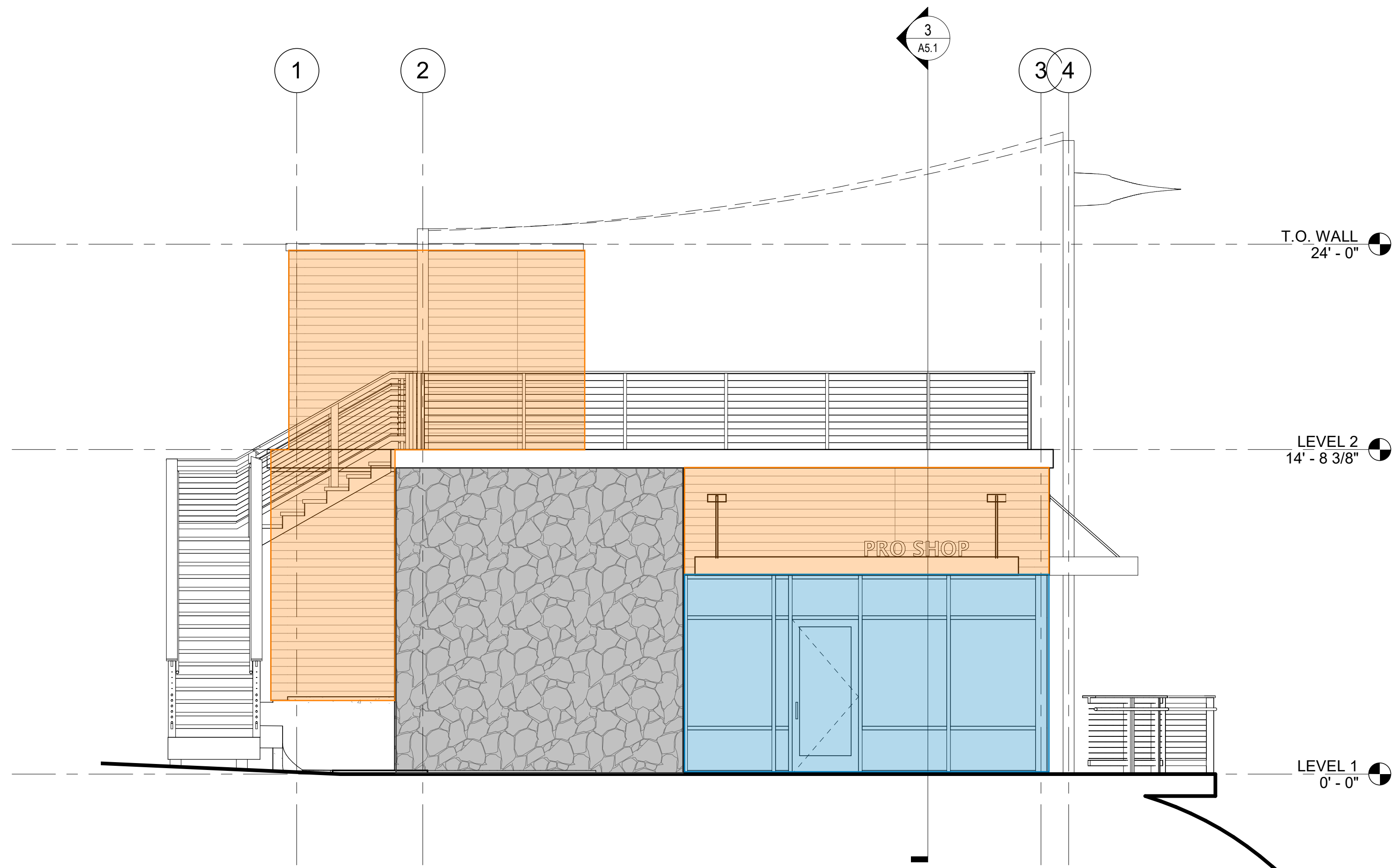
MATERIAL	PERCENT OF FACADE
NICHIHA WALL PANELS	52.5%
GLASS STOREFRONT	46.4%
STONE VENEER	1.1%

PRO SHOP
 3130 RIVERMONT PKWY
 JOHNS CREEK, GA 30022

Project No.: 20099
 Drawn By: GRG
 Date: 09-09-2022
 Issue: Johns Creek Variance

A4.1

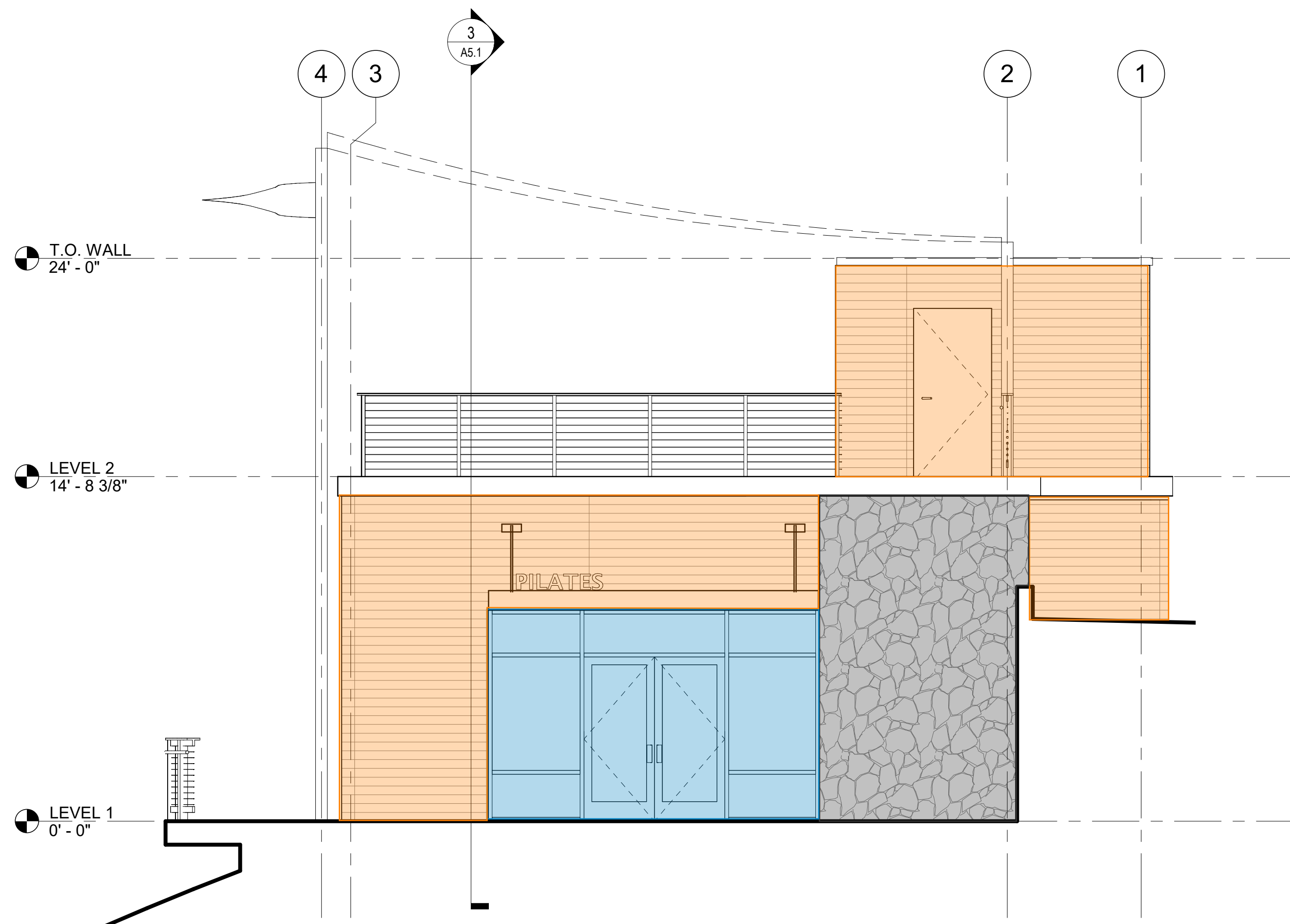
EXTERIOR ELEVATIONS



2 SOUTH ELEVATION
1/4" = 1'-0"

SOUTH ELEVATION MATERIALS

MATERIAL	PERCENT OF FACADE
NICHIHA WALL PANELS	42.7%
GLASS STOREFRONT	25.8%
STONE VENEER	31.5%



1 NORTH ELEVATION
1/4" = 1'-0"

NORTH ELEVATION MATERIALS

MATERIAL	PERCENT OF FACADE
NICHIHA WALL PANELS	51.3%
GLASS STOREFRONT	24.7%
STONE VENEER	24%

Design and construction documents are instruments of service as given in confidence and remain the property of Onyx Creative. The use of this design and these construction documents for purposes other than the specific project named herein is strictly prohibited without expressed written consent of Onyx Creative.

Project No.: 20099
Drawn By: GRG
Date: 09-09-2022
Issue: Johns Creek Variance