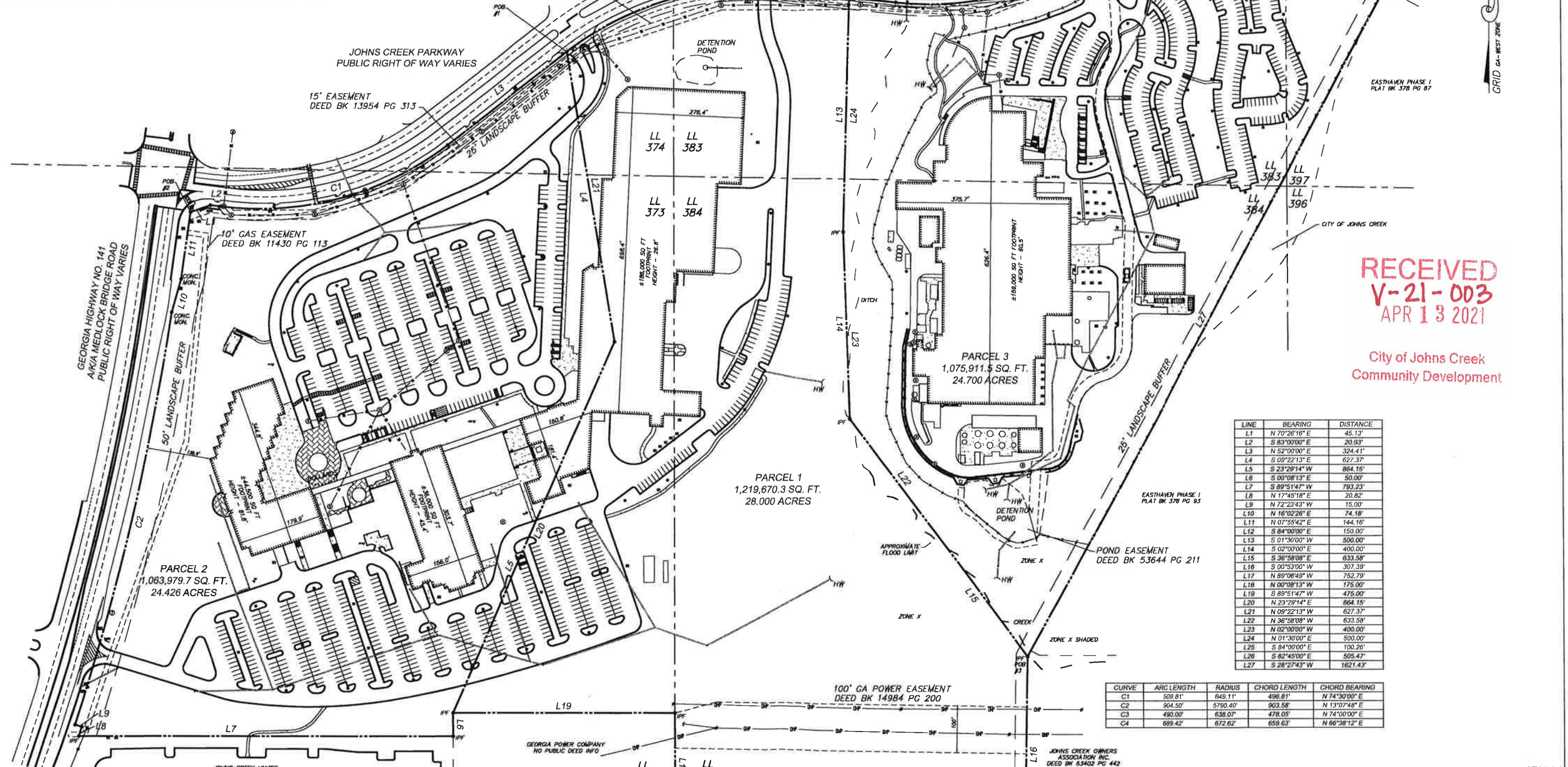


LEGEND

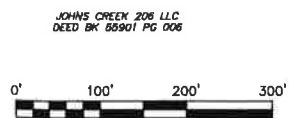
---	PROPERTY LINE	---	INVERT ELEVATION	---	GAS METER
---	LAND USE LINE	---	SEWER LINE	---	GAS VALVE
---	CONCRETE MESH/GRID FOUND	---	SEWER CLEANOUT	---	WATER METER
---	IRON PIN FOUND	---	DRIVE SHAFT	---	WATER VALVE
---	OPEN-TOP PIPE	---	POLE	---	WATER METER
---	CHIMNEY-TO-Pipe	---	POLE	---	WATER METER
---	POINT OF BEGINNING	---	POLE	---	WATER METER
---	BUILDING SETBACK LINE	---	POLE	---	WATER METER
---	CONCRETE	---	POLE	---	WATER METER
---	CURB	---	POLE	---	WATER METER
---	DRIVE	---	POLE	---	WATER METER
---	WALKWAY	---	POLE	---	WATER METER
---	DOUBLE-RING CATCH BASIN	---	POLE	---	WATER METER
---	SINGLE-RING CATCH BASIN	---	POLE	---	WATER METER
---	HEADWALL	---	POLE	---	WATER METER
---	STORM DRAINAGE PIPE	---	POLE	---	WATER METER
---	CORRUGATED METAL PIPE	---	POLE	---	WATER METER
---	CORRUGATED PLASTIC PIPE	---	POLE	---	WATER METER
---	REINFORCED CONCRETE PIPE	---	POLE	---	WATER METER



RECEIVED
V-21-003
APR 13 2021
City of Johns Creek
Community Development

LINE	BEARING	DISTANCE
L1	N 70°26'16" E	45.13'
L2	S 83°00'00" E	20.93'
L3	N 52°00'00" E	324.41'
L4	S 09°22'13" E	627.37'
L5	S 23°29'14" W	864.15'
L6	S 00°08'13" E	50.00'
L7	S 89°51'47" W	783.23'
L8	N 17°45'18" E	20.82'
L9	N 72°23'43" W	15.00'
L10	N 16°02'26" E	74.18'
L11	N 07°55'42" E	144.16'
L12	S 84°00'00" E	150.00'
L13	S 01°30'00" W	500.00'
L14	S 02°00'00" E	400.00'
L15	S 36°58'08" E	633.58'
L16	S 00°53'00" W	307.39'
L17	N 89°06'49" W	752.79'
L18	N 00°08'13" W	175.00'
L19	S 89°51'47" W	478.00'
L20	N 23°29'14" E	864.15'
L21	N 09°22'13" W	627.37'
L22	N 36°58'08" W	633.58'
L23	N 02°00'00" W	400.00'
L24	N 01°30'00" E	500.00'
L25	S 84°00'00" E	100.26'
L26	S 82°46'00" E	505.47'
L27	S 28°27'43" W	1621.43'

CURVE	ARC LENGTH	RADIUS	CHORD LENGTH	CHORD BEARING
C1	509.81'	849.11'	496.81'	N 74°30'00" E
C2	904.50'	5790.40'	903.58'	N 13°07'48" E
C3	490.00'	638.07'	478.05'	N 74°00'00" E
C4	689.42'	672.62'	659.63'	N 66°38'12" E



REVISION	DATE	PURPOSE

LAND PRO
SURVEYING AND MAPPING
305 CREEKSTONE RIDGE
WOODSTOCK, GA 30188
TELE: 404-386-2170
AUTHORIZATION NO. LBFD00838
WWW.LANDPROSURVEYING.COM
INFO@LANDPROSURVEYING.COM
COPYRIGHT 2018

ALTA/NPS LAND TITLE SURVEY
PREFCO TWENTY LIMITED PARTNERSHIP, A CONNECTICUT LIMITED PARTNERSHIP, ITS AFFILIATES AND THEIR RESPECTIVE SUCCESSORS AND/OR ASSIGNS, AND FIRST AMERICAN TITLE INSURANCE COMPANY
LAND LOTS 373, 374, 383, 384 & 397
DISTRICT 1, SECTION 1
CITY OF JOHNS CREEK
FULTON COUNTY, GA
SCALE: 1" = 100'
DATE: 03/08/18
PROJECT NO.: 20180308
SHEET: 2 OF 2