

**LEGEND**

- MH MANHOLE
- CB CATCH BASIN
- R/W RIGHT-OF-WAY
- BSL BUILDING SETBACK LINE
- DE DRAINAGE ESM'T.
- SSE SAN. SEWER ESM'T.
- S- SAN. SEWER LINE

This map or plat has been calculated for closure and is found to be accurate within 1 foot in 10,000 feet.

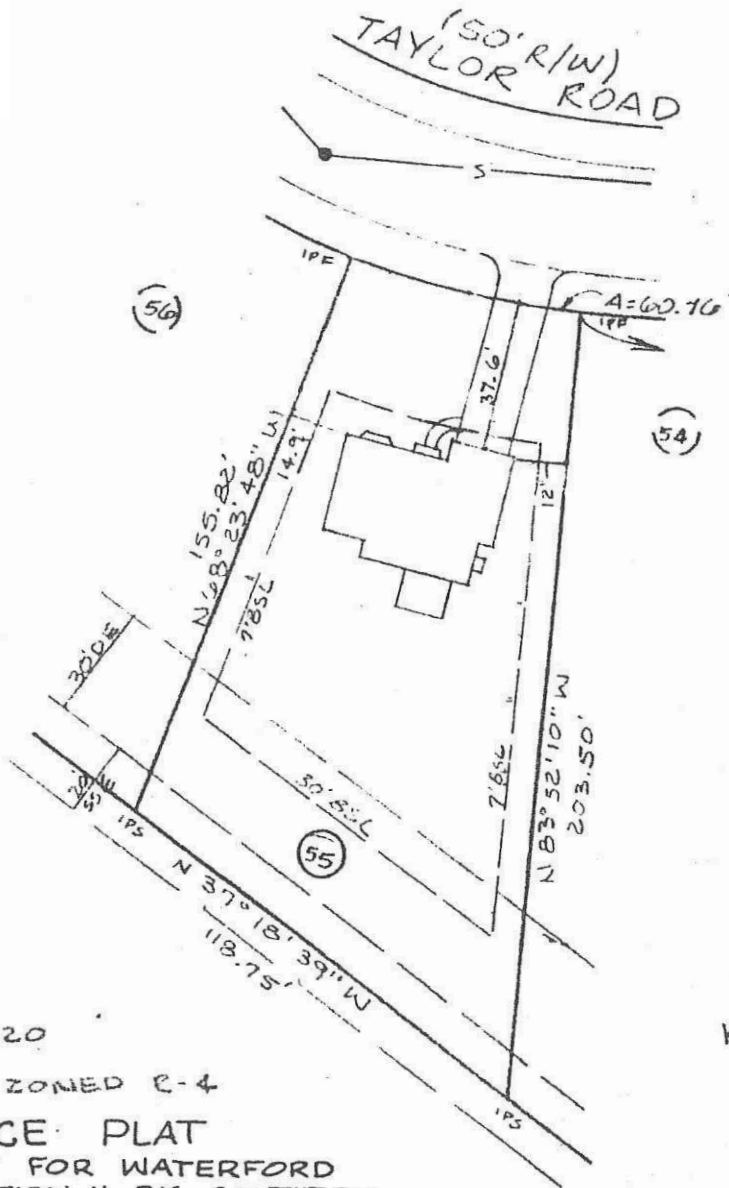
This plat has been prepared using a theodolite reading directly to 1 second and an electronic distance measuring device reading directly to 1, one thousandth of a foot.

The field data upon which this map or plat is based has a closure precision of (1) foot in 23,325 feet and an angular error of 2" per angle point, and was adjusted using compass rule.

RECEIVED

DEC 14 2021  
 V-21-0001  
 City of Johns Creek  
 Community Development

MAG. NORTH



187.29' TO THE R/W OF WINDSWEEP WAY (44' R/W) IF EXTENDED

IN MY OPINION, THIS PLAT IS A CORRECT REPRESENTATION OF THE LAND PLATTED AND HAS BEEN PREPARED IN CONFORMITY WITH THE REQUIREMENTS OF LAW.

*Travis N. Pruitt*  
 Travis N. Pruitt, Sr. RLS 1729

MFE = 1023.20

PROPERTY ZONED R-4

**REFERENCE PLAT**

FINAL PLAT FOR WATERFORD UNIT II SECTION II BY SOUTHERN CIVIL ENGINEERS, INC. REC'D IN P.B. 176 PG. 115 FULTON COUNTY MAR. 5, 1993

**FLOOD NOTE**

THIS LOT IS NOT LOCATED WITHIN A FLOOD HAZARD ZONE PER F.I.R.M. MAP COMMUNITY PANEL No. 135160-0055 C

LOAN PLAT FOR KEITH W FELDERMAN

LOT 55 BLOCK B WATERFORD UNIT II SECTION II

LAND LOTS 240 1ST DISTRICT 1ST SECTION FULTON COUNTY, GEORGIA SCALE: 1" = 50' DEC. 10, 1993



FOR THE FIRM TRAVIS PRUITT & ASSOC., P.C.

Travis Pruitt & Associates, P.C.  
 Consultants, Engineers & Surveyors

1901 Montreal Road  
 Suite 119  
 Atlanta, Georgia 30304  
 Phone: (404) 338-0117