

# STREAM BUFFER REVEGETATION/MITIGATION PLANS

## KEY

-  SMALL TREES
-  SHRUBS
-  GROUNDCOVER

## CALCULATIONS

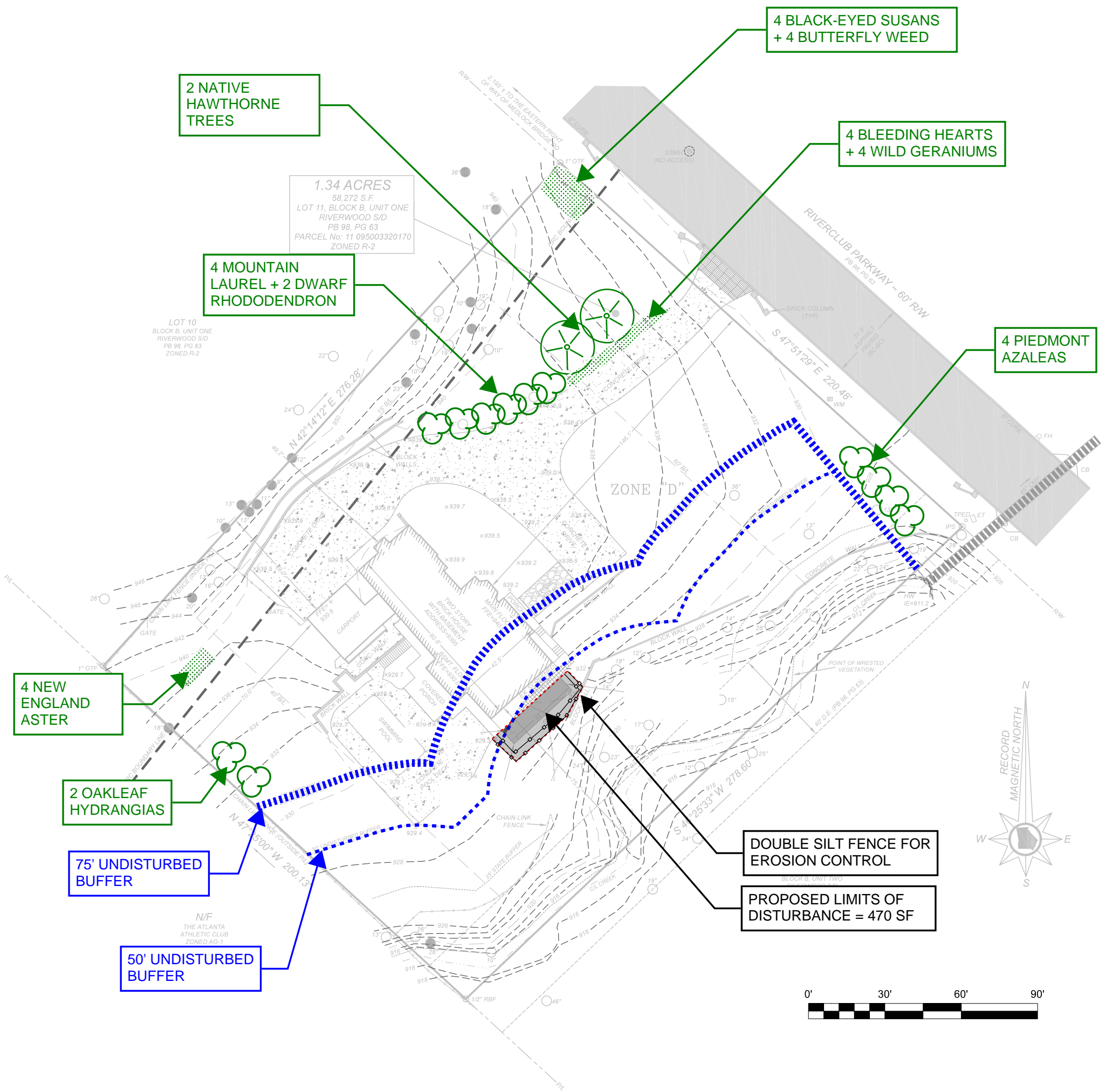
TOTAL DISTURBED = 470 SF

2 SMALL TREES @ 100SF EA = 200 SF

12 SMALL SHRUBS @ 16 SF EA = 192 SF

20 PERENIALS @ 4 SF EA = 80 SF

**472 SF**



NOTE: THIS DRAWING IS A SUPPLEMENT TO THE APPROVED SURVEY.