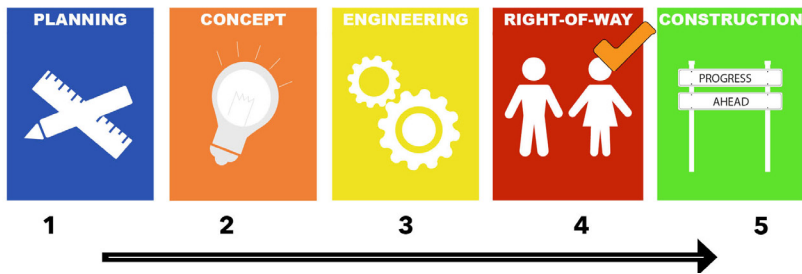




McGinnis Ferry Road Widening - Phase 2

Project Current Phase:

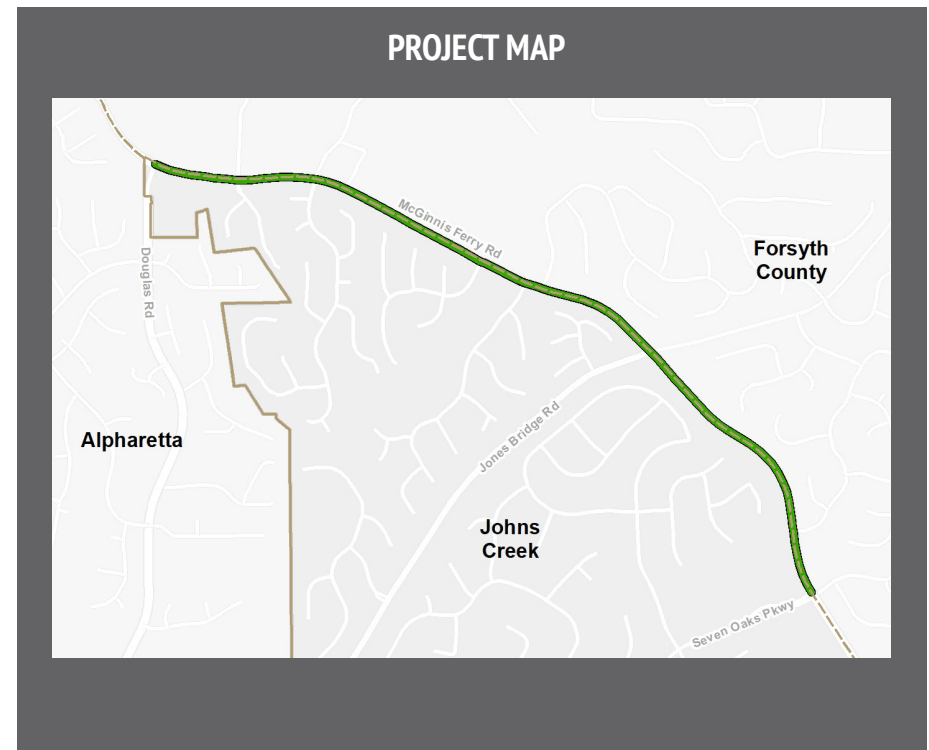


Where: Seven Oaks Parkway to Douglas Road

Why: Faster travel, less congestion

Who: City of Johns Creek, Forsyth County, City of Alpharetta

When: Construction in late 2021 / early 2022



Current Issues:

- Traffic congestion along corridor
- Original design was to handle 12,390 vehicles/day; currently handles 19,177/day (55% over capacity)

Solution:

- Widening from 2 to 4 lanes will accommodate a total of 35,820 cars/day
- Project cost: after engineering, current estimate is \$9 million for Johns Creek (of \$46 million total)
- City to apply for state grants to go towards project costs

Anticipated Results:

- Modeled widening project reduces delay by 58% or 4 minutes and 12 seconds per car
- Project reduces 733 hours of delay each day (considering volume)