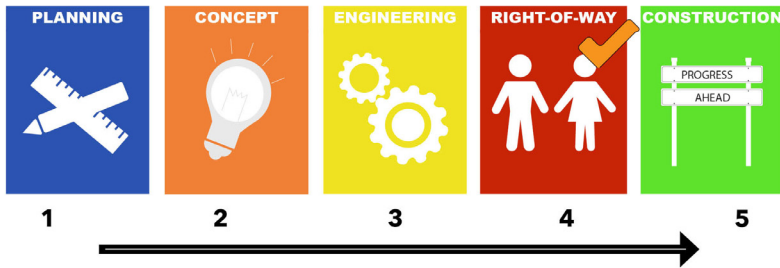




Bell Road at Rogers Circle Roundabout & Trail

Project Current Phase:

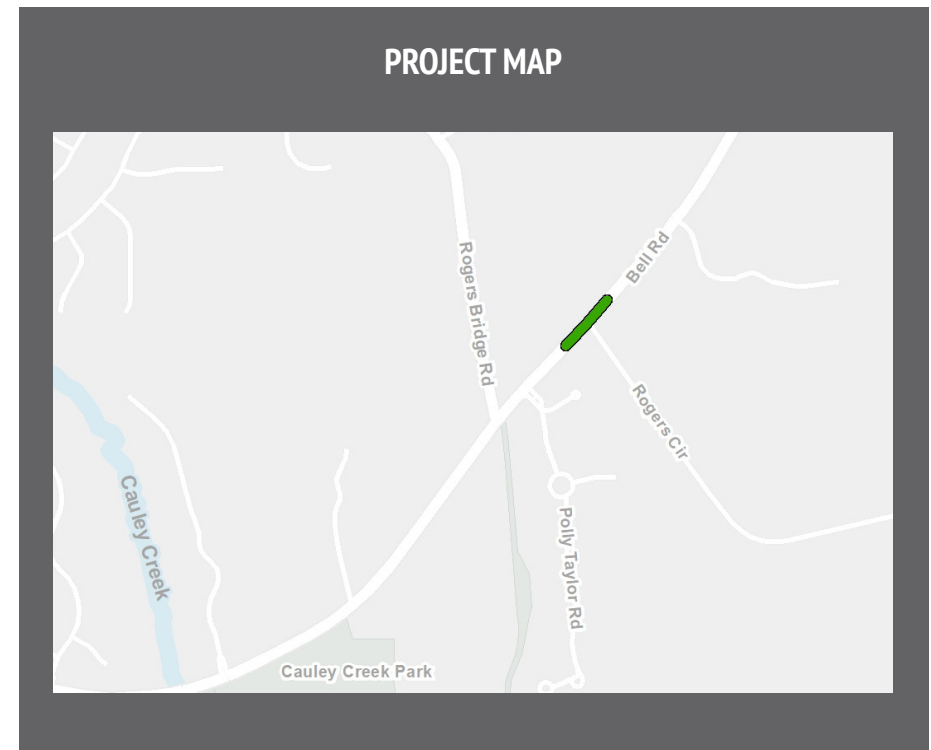


Where: Bell Road at Rogers Circle

Why: Safer and smoother travel; pedestrian connectivity

Who: City of Johns Creek

When: Construction in 2020; estimated duration is 12 months



Current Issues:

- Safety and traffic flow through the intersection
- Lack of sidewalk inhibits pedestrian safety access to surrounding area
- Poor sight distance due to vertical curve at intersection
- Intersection is used by school traffic on Rogers Circle

Proposed Solution:

- Installation of roundabout
 - Proposed improvement accommodates for high volume of left turning vehicles
- Addition of trail
 - Promotes connectivity to surrounding developments
- Project cost: \$1.4 million (estimated construction)

Anticipated Results:

- Improved safety and decrease in number of accidents
- Improved flow of traffic through the intersection