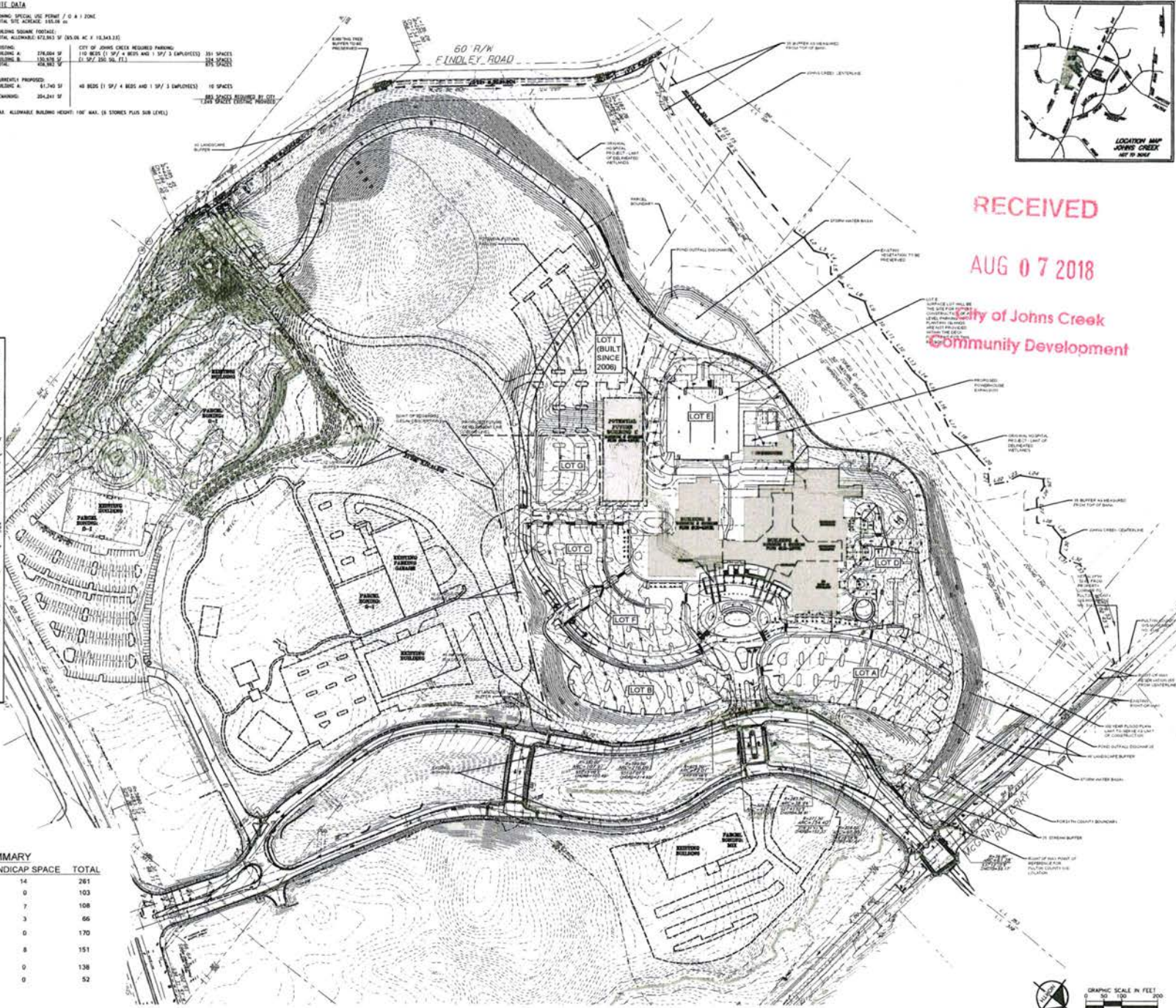


CODE	BEARING	DISTANCE
L1	N03°22'55"W	36.02
L2	N1°22'17"E	46.18
L3	N02°48'48"W	34.31
L4	N02°20'21"E	25.79
L5	N02°48'48"W	35.98
L6	N02°48'48"W	35.98
L7	N02°48'48"W	35.98
L8	N02°48'48"W	35.98
L9	N02°48'48"W	35.98
L10	N02°48'48"W	35.98
L11	N02°48'48"W	35.98
L12	N02°48'48"W	35.98
L13	N02°48'48"W	35.98
L14	N02°48'48"W	35.98
L15	N02°48'48"W	35.98
L16	N02°48'48"W	35.98
L17	N02°48'48"W	35.98
L18	N02°48'48"W	35.98
L19	N02°48'48"W	35.98
L20	N02°48'48"W	35.98
L21	N02°48'48"W	35.98
L22	N02°48'48"W	35.98
L23	N02°48'48"W	35.98
L24	N02°48'48"W	35.98
L25	N02°48'48"W	35.98
L26	N02°48'48"W	35.98
L27	N02°48'48"W	35.98
L28	N02°48'48"W	35.98
L29	N02°48'48"W	35.98
L30	N02°48'48"W	35.98
L31	N02°48'48"W	35.98
L32	N02°48'48"W	35.98
L33	N02°48'48"W	35.98

**SITE DATA**  
 ZONING SPECIAL USE PERMIT / D & I ZONE  
 TOTAL SITE AREA: 155.06 AC  
 BUILDING SQUARE FOOTAGE: 201,000 SF (150,000 AC X 1.3403 Z.F.)  
 TOTAL ALLOWABLE: 872,863 SF (150,000 AC X 5.8191 Z.F.)  
 EXISTING: BUILDING A: 278,000 SF (110 BEDS / 100 / 4, BEDS AND 100 / 3 EMPLOYEES) 201 SPACES  
 BUILDING B: 150,000 SF (60 BEDS / 60 / 2, BEDS AND 60 / 2 EMPLOYEES) 100 SPACES  
 CURRENTLY PROPOSED: BUILDING A: 61,240 SF (40 BEDS / 100 / 4, BEDS AND 100 / 3 EMPLOYEES) 10 SPACES  
 REMAINING: 254,241 SF (100 SPACES REMAINING ON SITE / 100 SPACES REMAINING)  
 MAX. ALLOWABLE BUILDING HEIGHT: 100' MAX. (6 STORES PLUS SUB LEVEL)

**NOTE:** NO CURRENT SITE SURVEY WAS PROVIDED. INFORMATION SHOWN IS FROM A COLLECTION OF PREVIOUS SURVEY RECORDS AND PARCEL RECORDS PROVIDED BY OTHERS. ENGINEER-HUMAN SHALL NOT BE HELD RESPONSIBLE FOR THE ACCURACY OF THIS INFORMATION.



**RECEIVED**  
**AUG 07 2018**  
 City of Johns Creek  
 Community Development

**PARKING SUMMARY**

LOT	STANDARD SPACE	HANDICAP SPACE	TOTAL
A	247	14	261
B	103	0	103
C	101	7	108
D	63	3	66
E	170	0	170
F	143	8	151
G	138	0	138
I	52	0	52

**tm p**  
 TMPartners, PLLC  
 211 Franklin Road  
 Suite 200  
 Brentwood, TN 37027-5593  
 615.377.9773 Office  
 615.370.4147 Fax  
 www.TMPartners.com  
 Architecture  
 Interiors  
 Planning

**FRANDEN ARCHITECTS, PC**

**EMORY JOHNS CREEK HOSPITAL  
 BED EXPANSION  
 JOHNS CREEK, GEORGIA**

RELATIONS

DR. BY	MESH
CK. BY	CRA
PRCJ. NO.	AD4618
DATE	08/06/18

CONCEPTUAL ZONING SITE EXHIBIT  
 EX. A

R2-18-005