



2450 Commerce Avenue | Suite 100  
Duluth, GA 30096-8910  
770.263.5945 | F 770.263.0166  
oneatlas.com

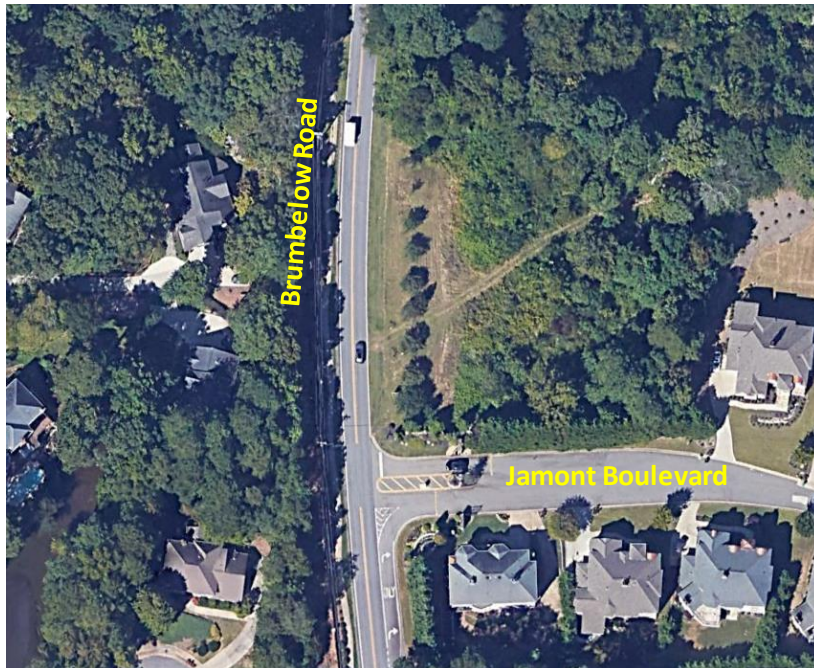


## Memorandum

To: John Jamont, Jamont Homes and Communities  
From: Robinson Nicol, PE, PTOE  
Date: February 14, 2022  
Subject: Trip Generation Memorandum for Proposed Residential Development at 9685 Brumbelow Road, Johns Creek, GA

---

The purpose of this memorandum is to estimate the trip generation that is expected to result from the proposed three lot residential development with the Parcel ID of 12 318009250466 located at 9685 Brumbelow Road in the City of Johns Creek, Georgia. Intersection and stopping sight distance for all approaches are adequate and in compliance with current AASHTO Standards.



### *Methodology*

Trip Generation estimates for the project were based on the rates and equations published in the 10<sup>th</sup> edition of the Institute of Transportation Engineers (ITE) Trip Generation Manual. This reference contains traffic volume count data collected at similar facilities nationwide. The trip generation referenced is based on the following ITE Land Use: 210- *Single Family Detached Housing*.



2450 Commerce Avenue | Suite 100  
Duluth, GA 30096-8910  
770.263.5945 | F 770.263.0166  
oneatlas.com

## Trip Generation

The results of the analysis for the proposed development are showing in Table 1, below.

Table 1 – Trip Generation								
Land Use	Size	AM Peak Hour			PM Peak Hour			24-Hour
		Enter	Exit	Total	Enter	Exit	Total	Two-way
ITE 210 – Single Family Detached Housing	3 lots	2	5	7	2	2	4	41

As shown in the above table, the three-lot residential development under *Land Use 210: Single Family Detached Housing* is expected to generate 41 total trips (entering and exiting) in a 24-hour period. During the AM Peak Hour, which occurs between 7:00 AM and 9:00 AM, 2 cars are expected to enter, and 5 cars are expected to exit. During the PM Peak Hour, which occurs between 4:00 PM and 6:00 PM, 2 cars are expected to enter, and 2 cars are expected to exit.

**RECEIVED**  
**RZ-22-0004**  
**MAR 08 2022**  
**VC-22-0009, VC-22-0012**  
**PLANNING & ZONING**