

Received  
March 5, 2024  
SUP-24-0001  
Planning & Zoning





**PREVIOUSLY APPROVED BUILDING USE /  
SQUARE FOOTAGE (SUP-12-002)**

**BUILDING G** - 35,330 SF  
- GYMNASIUM / ATHLETICS

**BUILDING H** - 41,700 SF  
- UPPER SCHOOL CLASSROOMS  
- ADMINISTRATION

**UPPER SCHOOL BUILDING** - 50,000 SF  
- NEW DINING FACILITY  
- UPPER SCHOOL CLASSROOMS  
- ADMINISTRATION

**FINE ARTS BUILDING (Not Built)** - 55,000 SF  
- FINE ARTS CENTER  
- MEDIA CENTER  
- ADMINISTRATION

**GYMNASIUM ADDITION (Not Built)** - 20,000 SF  
- NEW GYMNASIUM ADDITION

**TOTAL SQUARE FOOTAGE** - 202,030 SF

**PROPOSED BUILDING USE / SQUARE FOOTAGE**

**PHASE I** - 23,962 SF  
- EXISTING HOUSE (RENOVATED) - 4,662 SF  
- CURRICULUM ENHANCEMENT PROGRAMS - 19,300 SF

**PHASE II** - 46,600 SF  
- PERFORMING ARTS THEATER - 25,000 SF  
- ACADEMIC BUILDING #2 - 21,600 SF  
- PEDESTRIAN BRIDGE

**PHASE III** - 53,100 SF  
- NATATORIUM BUILDING - 31,500 SF  
- ACADEMIC BUILDING #1 - 21,600 SF

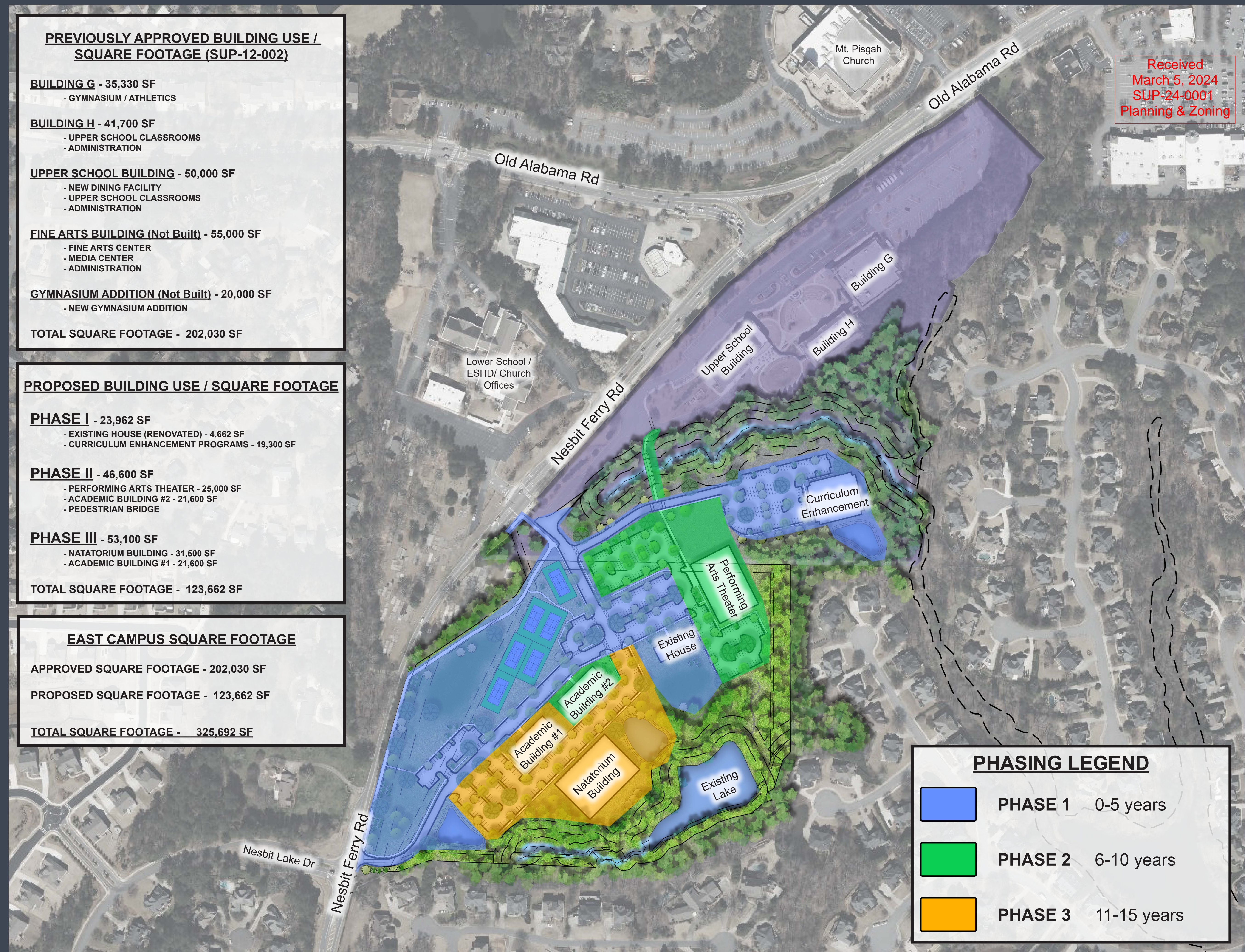
**TOTAL SQUARE FOOTAGE** - 123,662 SF

**EAST CAMPUS SQUARE FOOTAGE**

**APPROVED SQUARE FOOTAGE** - 202,030 SF

**PROPOSED SQUARE FOOTAGE** - 123,662 SF

**TOTAL SQUARE FOOTAGE** - 325,692 SF



**PHASING LEGEND**

PHASE 1	0-5 years
PHASE 2	6-10 years
PHASE 3	11-15 years