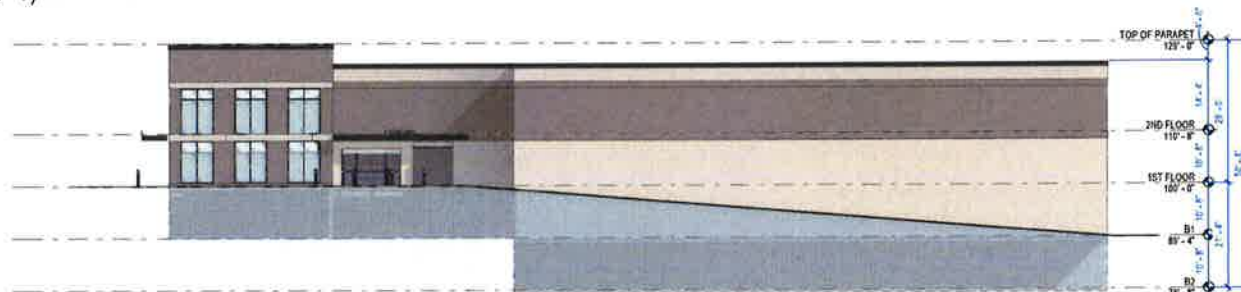




4 DESIGN - NORTH ELEVATION  
1/16" = 1'-0"

MATERIAL BREAKDOWN - NORTH ELEVATION  
TOTAL SQUARE FOOTAGE ABOVE GRADE - 5,411 SF

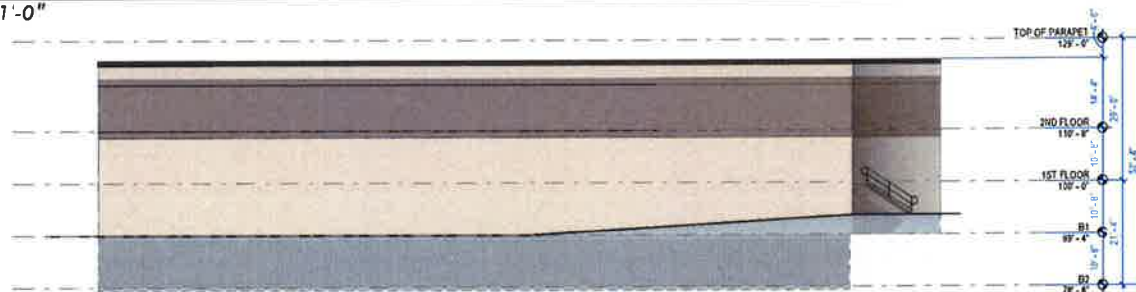
STONE	2,458 SF	45%
BRICK	1,897 SF	35%
GLAZING	493 SF	9%
STUCCO	563 SF	11%



3 DESIGN - SOUTH ELEVATION  
1/16" = 1'-0"

MATERIAL BREAKDOWN - SOUTH ELEVATION  
TOTAL SQUARE FOOTAGE ABOVE GRADE - 5,410 SF

STONE	2,128 SF	39%
BRICK	2,466 SF	42%
GLAZING	490 SF	7%
STUCCO	642 SF	12%



2 DESIGN - EAST ELEVATION  
1/16" = 1'-0"

MATERIAL BREAKDOWN - EAST ELEVATION  
TOTAL SQUARE FOOTAGE ABOVE GRADE - 5,756 SF

STONE	3,232 SF	56%
BRICK	2,068 SF	36%
STUCCO	456 SF	8%



1 DESIGN - WEST ELEVATION  
1/16" = 1'-0"

MATERIAL BREAKDOWN - WEST ELEVATION  
TOTAL SQUARE FOOTAGE ABOVE GRADE - 4,422 SF

STONE	833 SF	21%
BRICK	1,563 SF	35%
GLAZING	1,178 SF	27%
STUCCO	748 SF	17%

DG JONES BRIDGE

DAVIS GROUP, INC.  
2019114 09/12/2019

© 2019 merriman anderson architects, inc.

R2-20-001  
SUP-20-001  
RECEIVED

SEP 23 2019

City of Johns Creek  
Community Development

